



CIRCUIT RACING PROTECTION DEVICES



COMPANY PROFILE



Since 1954 SPM has been serving the sports industry with passion and technical expertise with the production of **safety and race equipment**.

Passion, research and innovation guarantee quality and reliability to all SPM items that are today found along numerous motorcycle circuits and on ski slopes all over the world: SPM products are used for the most prestigious events, such as Moto GP races, Superbike, National Championships, Winter Olympics, World Ski Championships, Ski and Snowboard World Cup races and many other competitions.

All SPM products are **tested and controlled** following strict parameters dictated by **FIM (Fédération Internationale de Motocyclisme)** and FIS (International Ski Federation). The constant collaboration with international federations and national teams allows us to always find excellent, reliable and advantageous solutions.

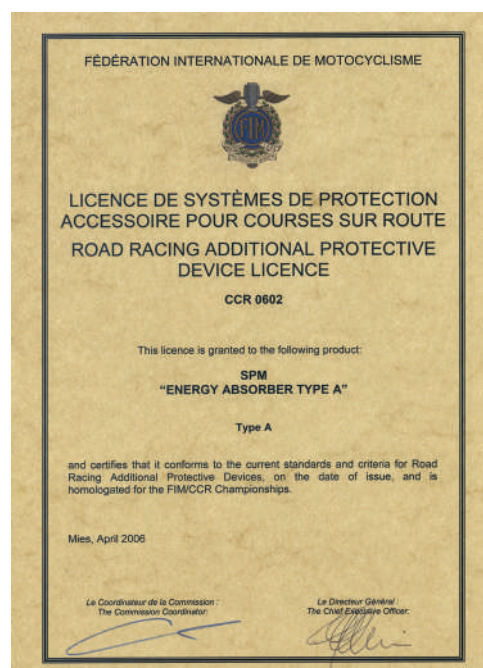
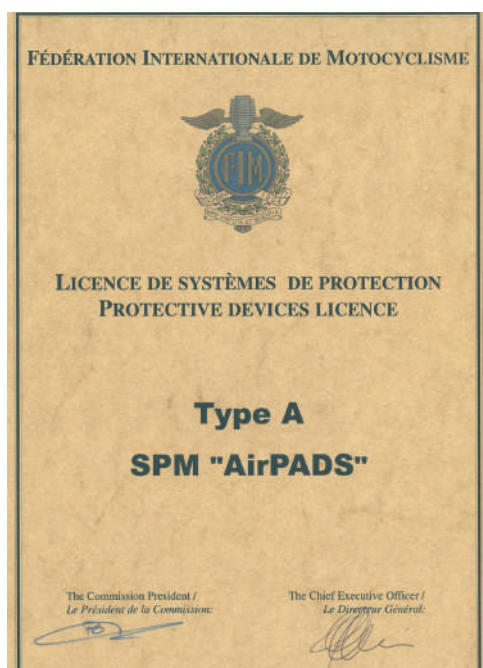
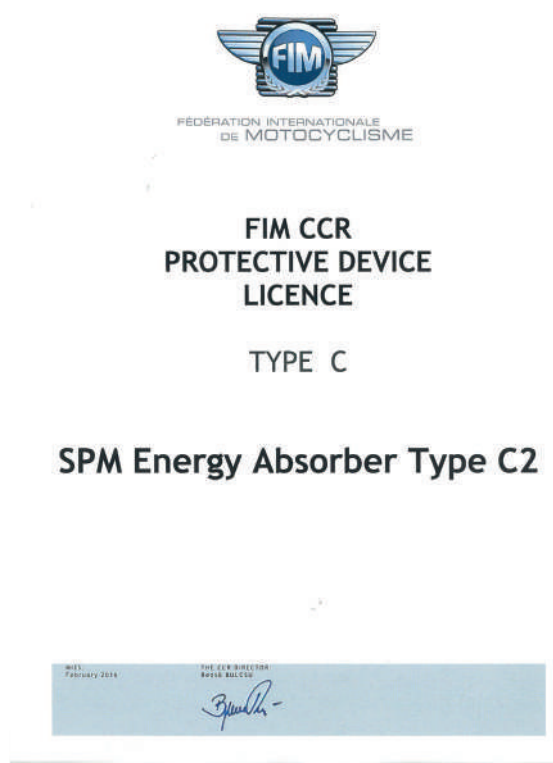
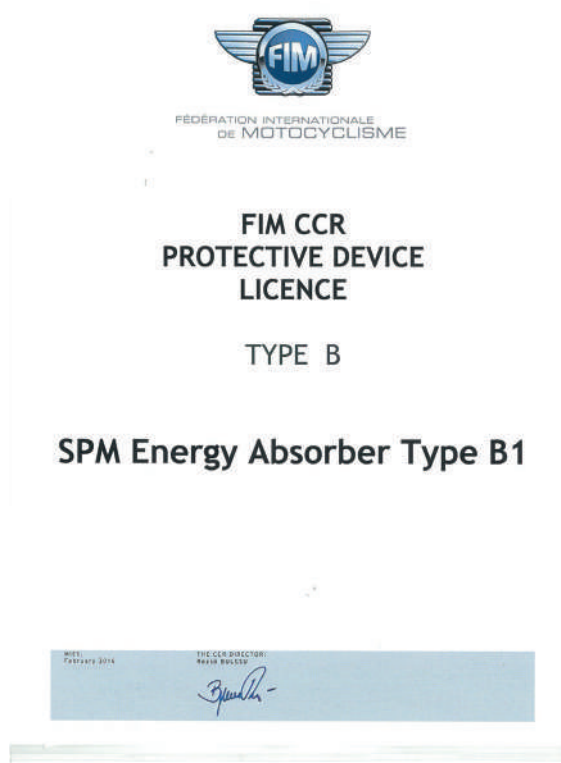
SPM considers **quality** a fundamental element of its company policy, a principle well applied to the entire company, with the following certifications:

- UNI EN ISO 9001 quality standard;
- Environmental UNI EN ISO 14001;
- Health and safety of workers UNI ISO 45001;
- Data security UNI CEI EN ISO / IEC 27001;



SPM products are carefully studied and developed. All the steps in the production process acquire value, with the utmost importance being given to the choice of raw materials and precision during the production processes.

The crash tests were performed using the most recent and advanced propulsion and control technologies at the centers recognized by the FIM: **Impact Laboratory - Zaragoza** and **CSI in Bollate**.





RENTAL SERVICE



SPM's wide range of products allows the organisation of sporting competitions of any level: for years, many venues hosting competitions and events selected and appreciated the quality of SPM's rental equipment. SPM products have been used for the most prestigious events in national and international motorbike racing, such as Moto GP, Superbike and Endurance races.

The **several advantages** are:

- Reduced Cost, low-cost investment to ensure maximum safety during the event;
- Compliance, use of products that meet the latest technical standards required;
- Constant monitoring, use of new and constantly controlled products;
- Maintenance, zero maintenance and storage costs for the equipment
- Saving money, decrease in personnel and handling costs
- Support, possibility of receiving support from our technicians

SPM products available for rent:

Safety Air Pads Type A and Type AA - Safety Nets - Nets and delimitation structures - Advertising structures - Bibs - Other materials as needed.

On request, a complete service is available, including organisation of transport, supervision during the installation and the dismantling of materials, support from our experts during the event, and collection of materials at the end of the event.



SPM SAFETY PRODUCTS





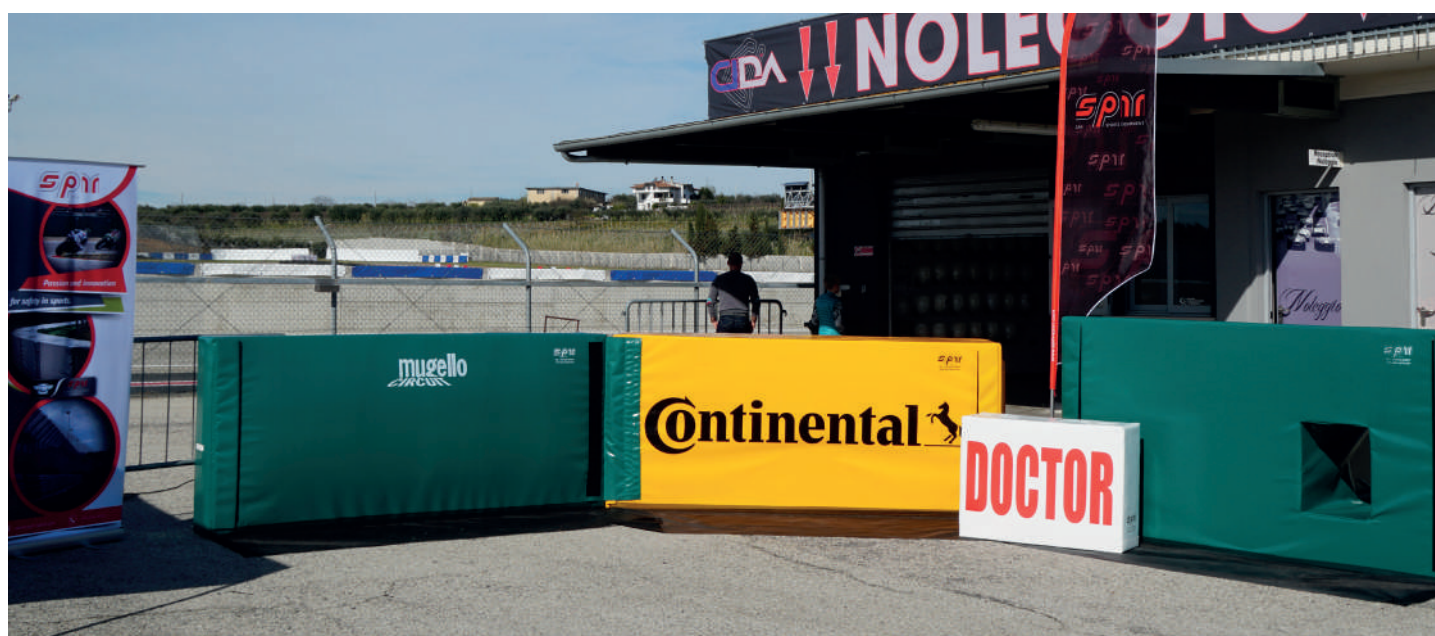
SPM protection devices are available in the following models:

High impact absorbing **Air Pads** are the best solution available to reduce the impact of an athlete in the event of a fall



Multi-Density Energy Absorber (MDEA) Pads (Type-A, Type-B and Type-C) provide protection similar to Air Pads, but require no inflation and minimal maintenance

Both Air Pads and MDEA Pads are **FIM** (Federation International de Motocyclisme) **approved** and homologated and are available in different dimensions and thicknesses. SPM Air Pads and MDEA Pads are the best solution to permanently or temporarily protect different kinds of obstacles.



AIR PADS

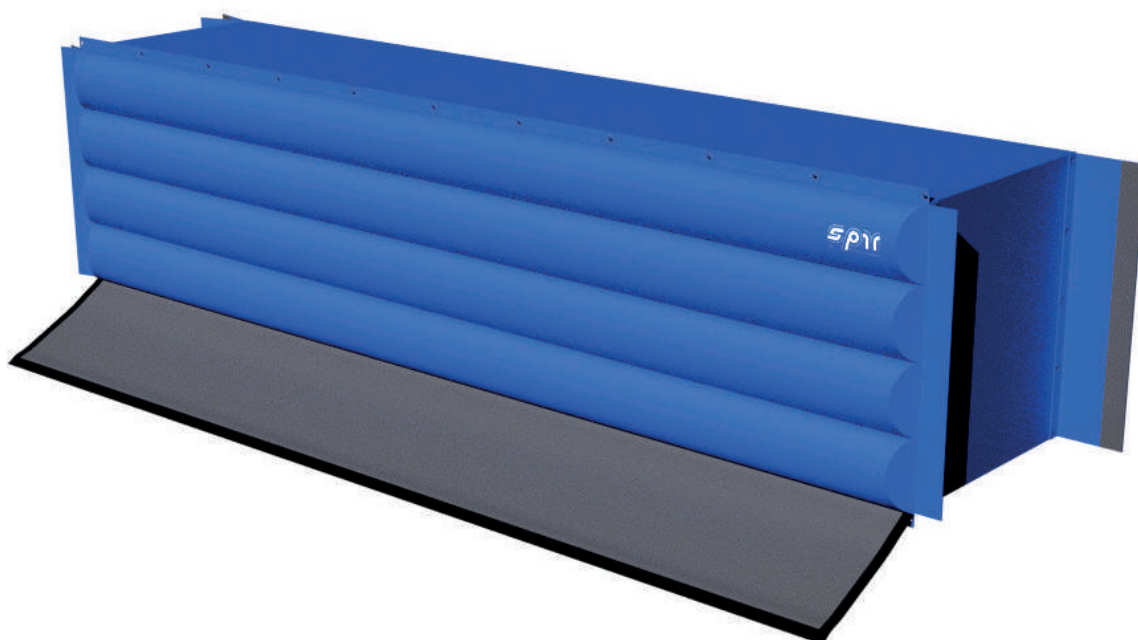


Air Pads are type A protection systems certified with FIM/CCR (Fédération Internationale de Motocyclisme) approval. They are easy to install and maintain mats used to protect dangerous areas of circuits where the highest standards of rider safety are required.

Each mattress, made of electro-welded PVC material, consists of two main chambers (one front and one rear) and secondary chambers located on the inside. The Air Pads are divided into:

- type A “Inflated”, with the inflation system disconnected;
- type AA “Permanently inflated”, with the inflation system permanently connected.

At the front of the pads, there is a PVC sheet that prevents – in the event of impact – the pilots from passing underneath the mattress.





TECHNICAL INFORMATION:

SPM Item #: 370301

Inflated Dimensions: 800 L x 130 H x 130 D (cm)

Weight: +/- 100 kg

ADVANTAGES:

- Excellent performance and reliability
- High speed impact absorption capacity
- Ideal for temporary installations
- Withstands multiple impacts
- Weatherproof
- Easy to install and little maintenance required
- Velcro bidirectional flaps connections
- Bottom flap made of reinforced PVC that allows water to run off
- Limited storage space



TYPE A ENERGY ABSORBER



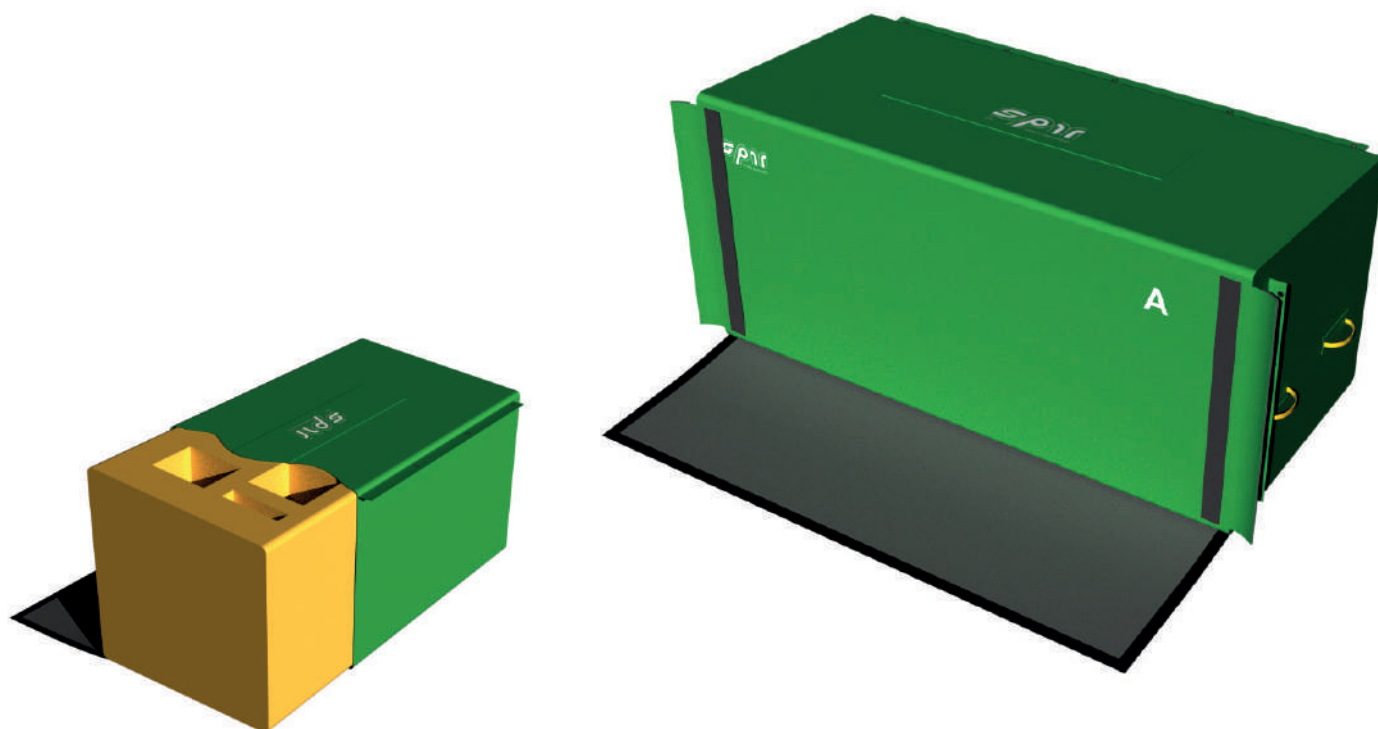
Type-A Multi-Density Energy Absorber (MDEA) Pads are a high impact absorption option that satisfy FIM's requirements. Like Air Pads, Type-A MDEA Pads are used to protect dangerous areas of the circuits, but unlike air pads they may be installed permanently and require essentially no maintenance.

CONSTRUCTION:

Type-A MDEA Pads are made of foam rubber covered with a fire resistant PVC shell. The inner construction consists of air chambers that ensure high impact absorbing performance.

The top of each pad is slightly inclined prevent rain accumulation, while vertical Velcro flaps allow multiple pads to be connected without sacrificing performance and rider safety.

On the front of each pad is a mesh PVC apron that prevents riders from passing underneath the pad. On the back of each Type-A MDEA Pad is an attachment system for supporting poles in addition to handles on each end of the pad that make moving single or multiple pads easy and efficient.





TECHNICAL INFORMATION:

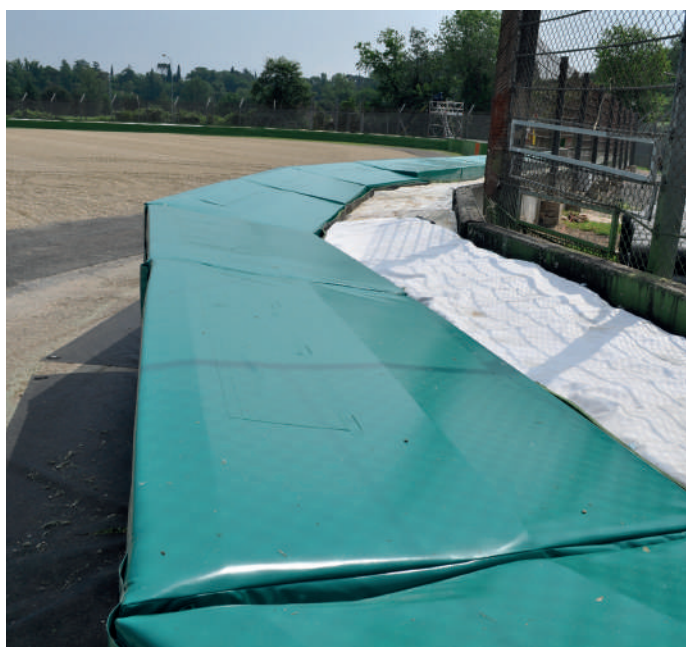
SPM Item #: 370083

Dimensions: 250 L x 130 H x 120 D (cm)

Weight: +/- 60 kg

ADVANTAGES:

- Excellent performance and reliability
- High speed impact absorption capacity
- Easy to install and perfect for permanent installations
- Withstands multiple impacts
- Weatherproof
- Less maintenance required
- Reinforced handles
- Bottom flap made of reinforced PVC that allows water to run off
- Velcro bidirectional flaps connections
- Custom Imprinting available
- Optional tear resistance PVC cover
- Available with a hole for timing photocell



TYPE B ENERGY ABSORBER



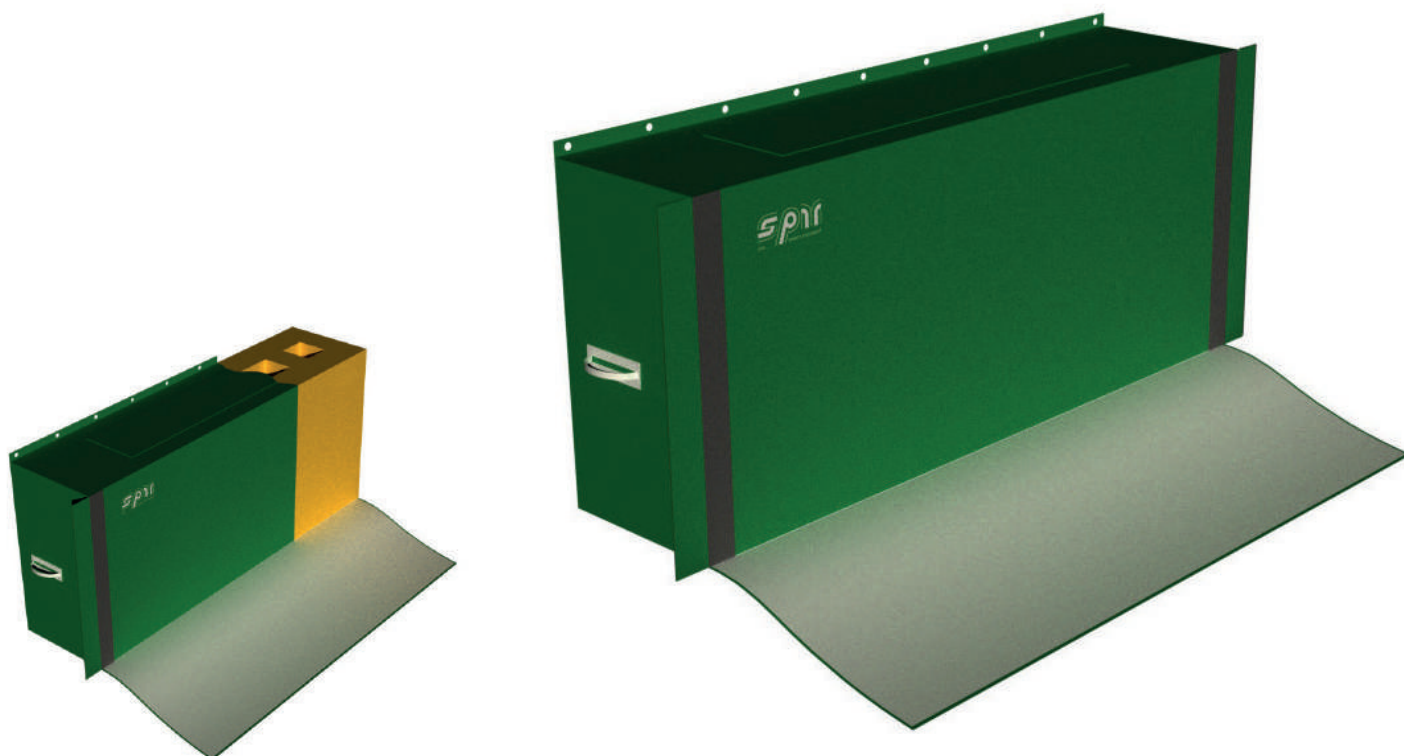
Type-B MDEA Pads are high absorption matts which satisfy the requirements of FIM. While offering less protection than SPM Air Pads and Type-A MDEA Pads, Type-B MDEA Pads offer a permanent protection option for applications requiring a smaller protection devices that provide good impact absorption capacity.

CONSTRUCTION:

Type-B MDEA Pads are made of foam rubber covered with a fire resistant PVC shell. The inner construction consists of air chambers that ensure high impact absorbing performance.

The top of each pad is slightly inclined prevent rain accumulation, while vertical Velcro flaps allow multiple pads to be connected without sacrificing performance and rider safety.

On the front of each pad is a mesh PVC apron that prevents riders from passing underneath the pad. On the back of each Type-A MDEA Pad is an attachment system for supporting poles in addition to handles on each end of the pad that make moving single or multiple pads easy and efficient.





TECHNICAL INFORMATION:

SPM Item #: 370086

Dimensions: 250 L x 110 H x 60 D (cm)

Weight: +/- 30 kg

ADVANTAGES:

- Excellent performance and reliability
- High speed impact absorption capacity
- Easy to install and perfect for permanent installations
- Withstands multiple impacts
- Weatherproof
- No maintenance requirements
- Reinforced handles
- Velcro bidirectional flaps connections
- Bottom flap made of reinforced PVC that allows water to run off
- Custom Imprinting available
- Optional tear resistance PVC cover



TYPE C ENERGY ABSORBER

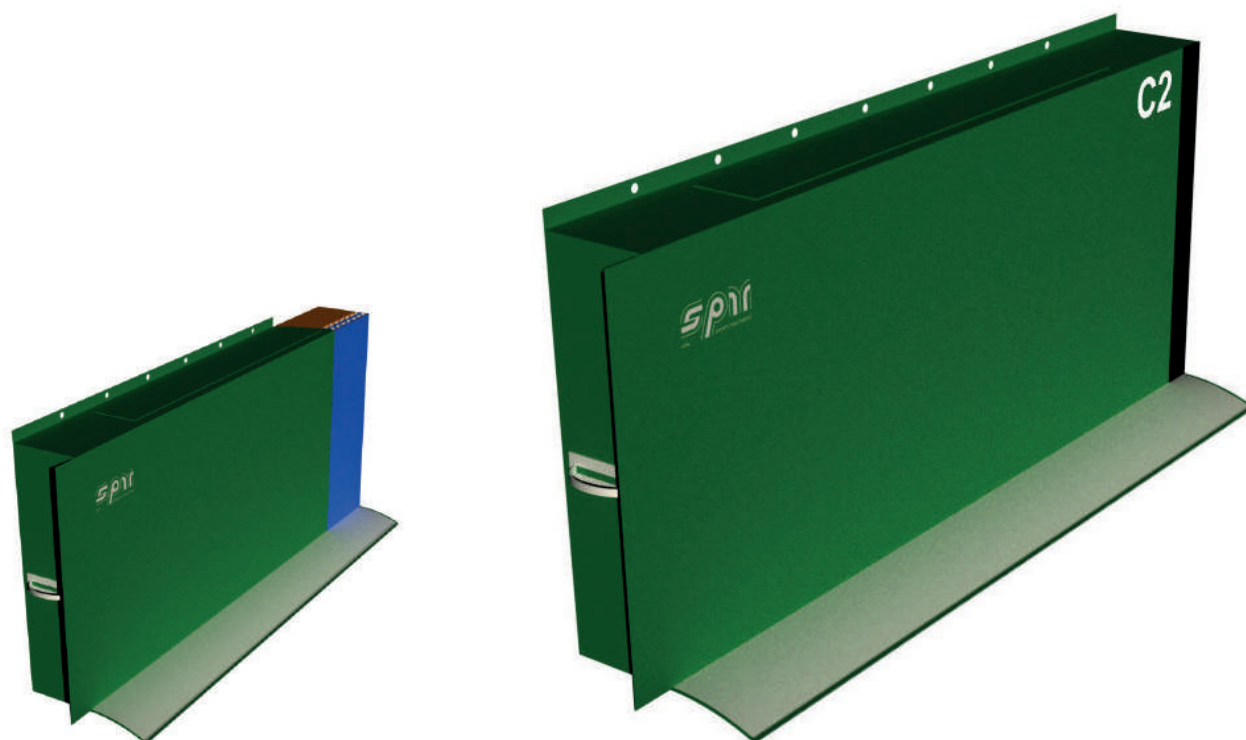


Type-C MDEA Pads are high absorption matts which satisfy the requirements of FIM to replace the hay bales (forbidden from beginning of 2018). While offering less protection Type-B MDEA Pads, Type-C MDEA Pads offer a permanent protection option for applications requiring a smaller protection devices that provide good impact absorption capacity.

CONSTRUCTION:

Type-C MDEA Pads are made of foam rubber covered with a fire resistant PVC shell.

The inner construction consists of air chambers that ensure moderate impact absorbing performance. The top of each pad is slightly inclined prevent rain accumulation, while vertical Velcro flaps allow multiple pads to be connected without sacrificing performance and rider safety. On the front of each pad is a mesh PVC apron that prevents riders from passing underneath the pad. On the back of each Type-C MDEA Pad is an attachment system for supporting poles in addition to handles on each end of the pad that make moving single or multiple pads easy and efficient.





TECHNICAL INFORMATION:

SPM Item #: 370087

Dimensions: 250L x 110 H x 30 D (cm)

Weight: +/- 18 kg

ADVANTAGES:

- Good performance and reliability
- Moderate speed impact absorption capacity
- Ideal for permanent installations
- Weatherproof
- Reinforced handles
- Easy to install, no maintenance requirements
- Velcro bidirectional flaps connections Economic solution
- Bottom flap made of reinforced PVC that allows water to run off
- Custom Imprinting available
- Optional tear resistance PVC cover
- Optional: inner structure of Type C could be in different materials



DOCTOR PROTECTION DEVICE



Technical information:

SPM Item #: 370080-DOC

Dimensions: 100 L x 70 H x 30 H (cm)

Weight: +/- 11 kg, with reinforcement

Technical information:

SPM Item #: 370080-DOC2

Dimensions: 100 L x 70 H x 30 H (cm)

Weight: +/- 10 kg, without reinforcement

A smaller version of the Type-C MDEA Pad used to protect injured riders and/or circuit workers attending to crashes requiring medical or other assistance. With lateral handles.

ADVANTAGES:

- high visibility on the track
- Excellent performance and reliability
- Durable and no maintenance required
- Easy and efficient to move and transport
- Fireproof PVC cover





SPECIAL SHAPE PROTECTION DEVICES

WEDGE-SHAPED MATS

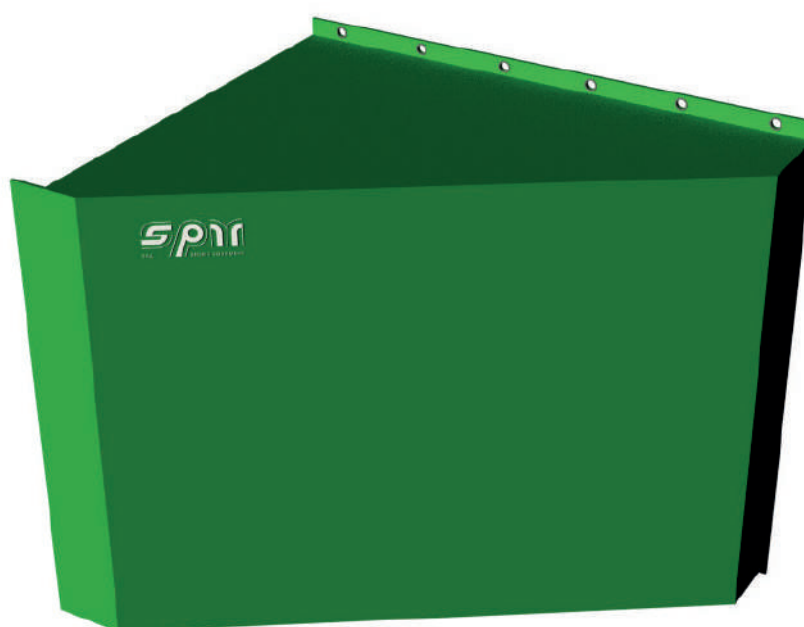
SPM Item #: 370089

Dimensions: 150 L x 130 H x 120 D cm

Weight: +/- 30 kg

Similar in design and performance to the Type-A MDEA Pads but in a wedge shape. All the same features, just a different shape.

Intended to be placed at the beginning and end of a Type-A MDEA line to 'round out' the corners of the rectangular pieces., at the end or at the beginning of a row of Type-A or to connect Type-A with Type-B / Type-C.



SPECIAL SHAPE PROTECTION DEVICES

MATS FOR CAMERA OF PHOTOCELL

SPM Item #: 370085-FOTOC

Dimensions: 250 L x 130 H x 120 D cm

Weight: +/- 67 kg



Energy Absorber Type-A MDEA pad with a frontal hole for photocell, specially designed for timing line.

Standard hole's dimension is 40x50cm, other holes dimension are available on request.

Composed by a internal construction made of foam rubber covered with an outer casing of self-extinguishing PVC. The specific inner ensures high absorption performances.

On the front there is a the PVC net that avoids the passage of riders under the mattress itself in case of impact.

SPM pads are supplied with hooking system lateral handles to facilitate movements.





CUSTOMIZATIONS

WRAPPING SYSTEM & SERIGRAPHY



REFERENCES

Circuits that have relied on the quality and reliability of our products:

Circuit de BARCELONA-CATALUNYA

Autodromo do ESTORIL

Autodromo Enzo e Dino Ferrari IMOLA

Autódromo Internacional do Algarve PORTIMAO

Circuito JEREZ DE LA FRONTERA

MISANO World Circuit

MUGELLO Circuit

Circuit PAUL RICARD Le Castellet

RICARDO TORMO Circuit Valencia

Circuito de NAVARRA

Circuito de ALBACETE

MOST Autodrom

SILVERSTONE Circuit

SEPANG International Circuit

Circuito Internazionale d'ABRUZZO

CREMONA Circuit

DUCATI Test Track (Borgo Panigale)

LEVANTE Circuit

MODENA Circuit

MONZA ENI Circuit

POMPOSA Circuit

Circuit du VAR

Autodromo Riccardo Paletti VARANO

BOSH Proving Ground

BRIDGESTONE Firestone Technical Center Europe

CONTINENTAL Test Cente



NOTE

This image shows a full page of white paper with horizontal dashed lines, typical of primary school writing paper. The lines are evenly spaced and run across the width of the page. There are no margins, text, or other markings on the paper.

[illegible]

HEADQUARTER

Via Provinciale 26, 21030 Brissago Valtravaglia (VA) ITALY

Tel. +39 0332 54 20 11 Fax +39 0332 57 61 68

sport@spmspa.it www.spm-sport.com



SPM S.p.A. reserves the right to modify the technical specifications of the products described in this catalogue without notice. © SPM S.p.A. - The contents of this catalogue may not be reproduced without written authorisation from SPM. PROTECTION OF INTELLECTUAL PROPERTY. Please note that many of the products described in this catalogue are covered by patents. SPM S.p.A. reserves the right to take any action to protect its rights.